

User Manual V2.0



RX-3 LITE

BODY WORN CAMERA

Introduction

Thank you for purchasing the RX3-Lite professional body-worn CCTV camera system. This guide details how to operate, configure and download data from the RX-3 Lite camera. Please keep this guide for future reference.

Charging

Before using the camera for the first time, the internal Li-ion battery needs to be charged for 4-5 hours. To charge the camera, place the unit in the charging dock and connect to the mains using the USB cable and mains charger supplied with the camera.



Software Installation

The latest version of the software for the RX3-Lite is available on www.rewiresecurity.co.uk/download. Once downloaded extract the rewiresecurity.exe file on to your computer's desktop. Once done follow the steps below to install the camera software. Note: the RX3-Lite is not Mac compatible.

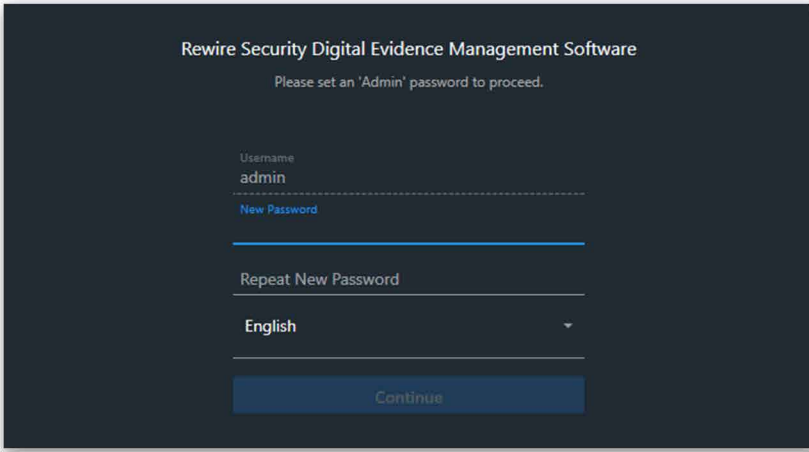
1. Double click the newly downloaded rewiresecurity.exe installation file to start the camera software installation.
2. The application installer will check if the necessary framework is installed on your computer. If you are prompted to install '.NET Framework' please install it before you proceed with the camera software installation. The installation can take a few minutes. Once complete please rerun the rewiresecurity.exe to proceed.
3. If prompted about an 'unknown application' click Yes/OK to continue. The camera software will be automatically installed on your system.

You can find a shortcut to the application on your desktop.

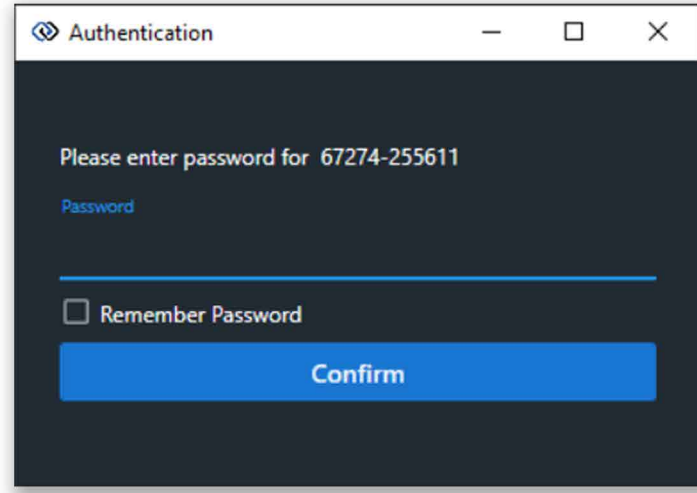
Downloading Data & Configuration

To download recorded data and configure the RX3-Lite body worn camera please follow the steps below.

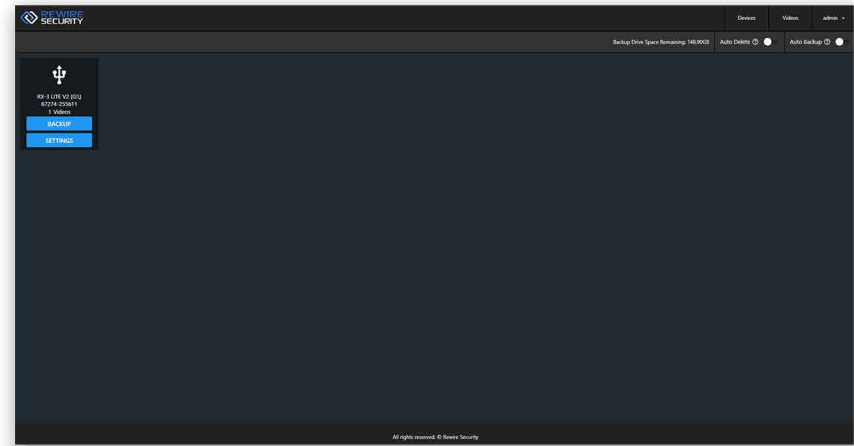
- 1. Connect the camera to your computer while switched OFF using the supplied dock and USB cable. Once connected the camera will switch on and play a start-up tone.
- 2. Open the 'Rewire Security' software, the software will detect the camera and you'll be asked to create a password for your Rewire Security software account.



- 3. You will now be prompted to enter the cameras password. The default password is 000000 . Once entered click "login".

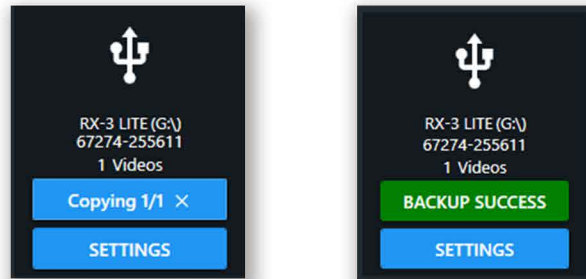


- 4. Once logged in, you will be able to access the dashboard which shows the camera connected, it's media and settings.

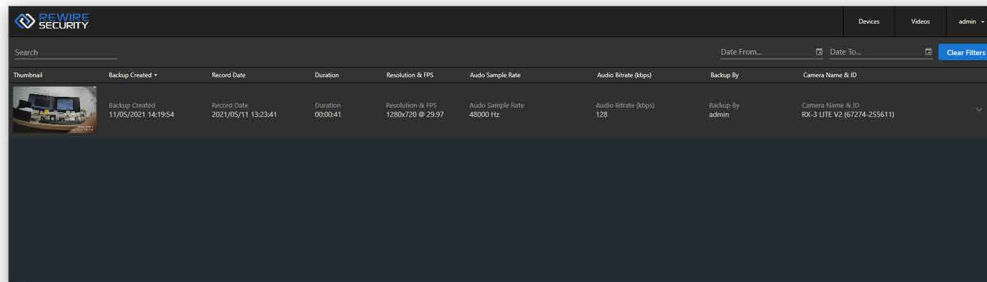


Downloading Data & Configuration

5. To view the camera media, you will need to first backup the media onto your Rewire Security software by pressing 'Backup'. Once this has completed, a message will display 'Backup Success'.



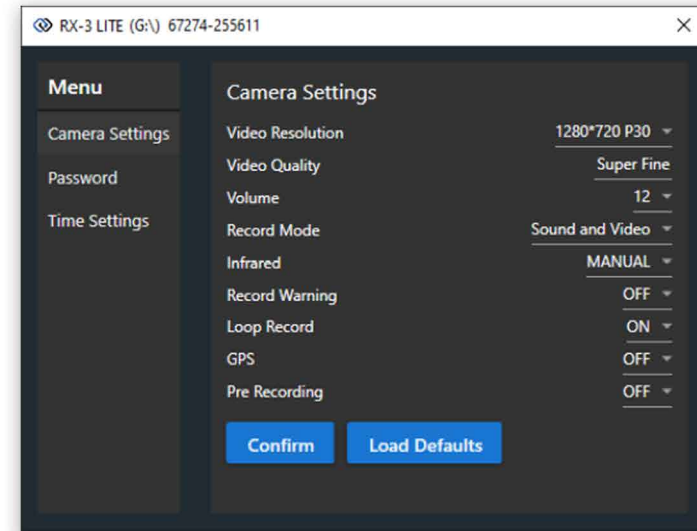
6. Next, to access the backed up media, click on the 'Videos' tab in the top right of the page. This will show you all media. From here you can edit, export and manage your footage.



You can access the device settings by click on 'Settings' of the connected device on the device page. You will be prompted to disconnect the device for 5 seconds and reconnect in order to access configuration mode.

Please disconnect the USB cable from the camera. wait 5 seconds then reconnect!

7. Once you have done this, you will be greeted by the settings menu for the connected device. Here you can access the camera settings, time settings and change the password of the device.



Video Resolution: Set the video resolution the camera records in

Video Quality: Set the sharpness of the recorded video.

Volume: Set the volume of the camera internal speaker.

Record Mode: Select the type of recording, Sound + Video or Video only

Infrared: Toggle between automatic and manual infrared

Record Warning: Turn ON/OFF audible alerts for recording.

Loop Record: Turn on loop record to allow the camera to overwrite recordings when full.

GPS/Glonass: Turn ON/OFF GPS location logging.

Video Split Time: Set the time for how often the camera splits video files during continuous recording

Time Zone: Set the GMT time zone the camera is being used in. Example: Time Zone 1 for British summer time.

Pre Recording: Set camera to constantly record in segments, record button saves last segment

Once finished, click 'Save and Exit' to save changes or 'Exit' to close without saving

Specifications

Recording Quality: 1080P, 720P, 480P (H.264 MPEG4)
Casing: Toughened ABS Plastic Casing, Weatherproof IP65 Rated
Memory: 32GB Built-in (Anti Tamper)
File Split Time: Adjustable Between 3, 5, 10, 15, 30 minutes
Recording Time: 480P 13-14hrs
720P 8-9hrs
1080P 5-6hrs
Battery: 3.7v 2900mAh Rechargeable Lithium Battery
Battery Life: (Continuous Recording GPS Off)
480P 9-11hrs
720P 7-9hrs
1080P 4-6hrs
Charge Time: 4-6 hours
Connectivity: USB2.0 (Data Download & Charging)
Working Temperature: -10c - +60c @ max 95% humidity
(non condensing)
Dimension: 85mm x 56mm x 24mm
Weight: 130g
Compliance:CE, RoHs

Mount Options: KlickFast Dock Ready, Rotating Spring Loaded Clip. KlickFast Garment Mount (Included)
Other Features: Time & Date Stamp, Device ID. GPS coordinates embedded into Video. Vibration Feedback, Audio Feedback, Record Indicator, One Touch Record From Off, Custom Camera ID, User ID, GPS logging
Optional Accessories
Car Window Mount, Locking USB Power Bank Cable & All KlickFast Accessories

Notes of use

Always safely eject the camera before dismounting.
Always download and backup data between uses.
Never place the camera on or near strong magnetic fields.