

User Manual for Mobile Check



Copyright ©2013-2016
All Rights Reserved

Notice

The purpose of this manual is to kindly aid the user for the operation for Mobile Check.

The information in this manual was current when published. The manufacturer reserves the right to revise and improve its products. All specifications are therefore subject to change without any notice.

Copyright

Under copyright laws, the content of this manual may not be copied, photocopied, reproduced, translated or reduced to any electronic medium or machine- readable form, in whole or in part, without prior written consent of our company.

Guarantee & Warnings

1) Electrical Apparatus Safety

All installation and operation should comply with local electrical safety norms.

2) Transportation

In the process of transportation, storage and installation, please avoid heavy stress, violent vibration, impact and water splashing.

3) Installation

Install the equipment in accordance with the requirements, handle carefully. Do not put anything on Mobile Check.

4) Requirements on Engineers & Technicians

All the work of checking and maintenance should be done by qualified technicians and engineers. We do not undertake any responsibility caused by unauthorized modifications.

5) Requirements on Environment

The equipment should be installed and stored in a cool and dry place, away from direct sunlight, flammable or explosive substances, etc.

6) Accessories

Make sure to use accessories from the manufacturer recommended in the attachment.

Insulate circuit ground and metal shell for all the peripherals.

Before installation, please open the package and ensure that all parts are included.

If there are any problems, please contact us as soon as possible.

Contents

1. Product Characteristics.....	5
1.1. Overview.....	5
1.2. Features.....	5
1.3. Specifications.....	5
1.4. Dimension.....	6
2. Software Instrument.....	7
2.1. Software Log In.....	7
2.2. Module Overview.....	8
2.3. Function Overview.....	8
2.3.1. Common.....	8
2.3.2. Preview.....	10
2.3.3. Playback.....	10
2.3.4. Preference.....	12
2.3.5. Help.....	19

1. Product Characteristics

1.1. Overview

Mobile Check is made up of software and WIFI module.

Mobile Check is a device management software running in Android tablet. People could manage the MDVR conveniently via the software when it is connected the device through WIFI, which could improve maintenance and management efficiency.

1.2. Features

WIFI Module Features

- 1) It is much more convenient to use the device in limited space, for it adopts extensional cord USB design;
- 2) Plug and play, and it will connect automatically via WIFI;
- 3) Support external SD card file backup.

Software Features

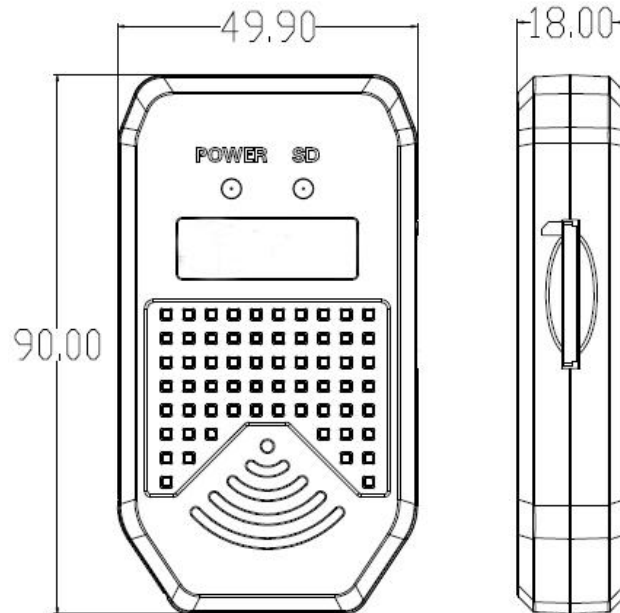
- 1) Search and find the MDVR via WIFI network in a second;
- 2) Check the status information of device;
- 3) Support multi-channel HD video real-time preview;
- 4) Support main and sub streams switch automatically when switching images;
- 5) Support video/track, speed curve playback analysis;
- 6) Support video backup and unlock the locked video;
- 7) Support the export of device alarm log, user operation log and parameter file;
- 8) Support single firmware update.

1.3. Specifications

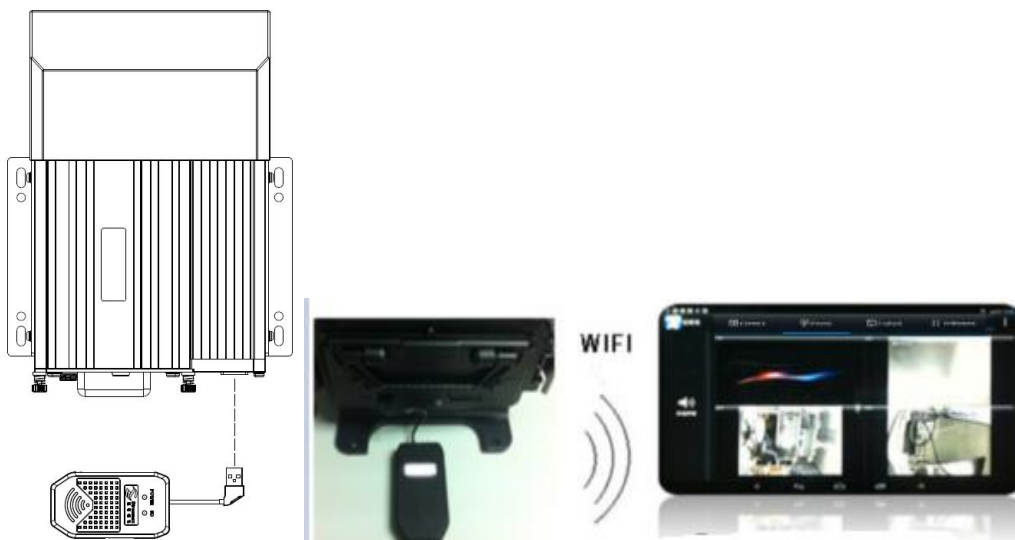
Product Series		Mobile Check
Function Overview		Preview, playback, search, setting
System	Operation System	No
	Control Mode	WIFI
Interface	USB	USB 2.0x1
	SD	SDx1
Network	WIFI	Support(802.11b/g/n) 2.4GHz
	Transmission Rate	20 Mb/s
	Available Range	Within 10 meters
Power	Voltage	DC 5V
	Current	500mA@5V
Physical Characteristics	Dimension(L x W x H)	49.9x90x18 mm
Environment	Working Temperature	-10℃~+50℃
	Working Humidity	20%-80%(Non-condensing)

1.4. Dimension

Unit: mm



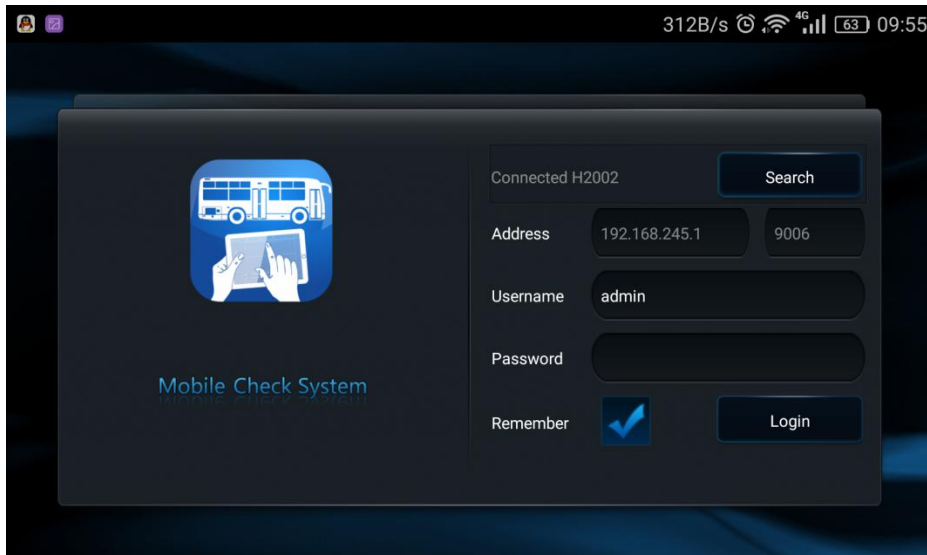
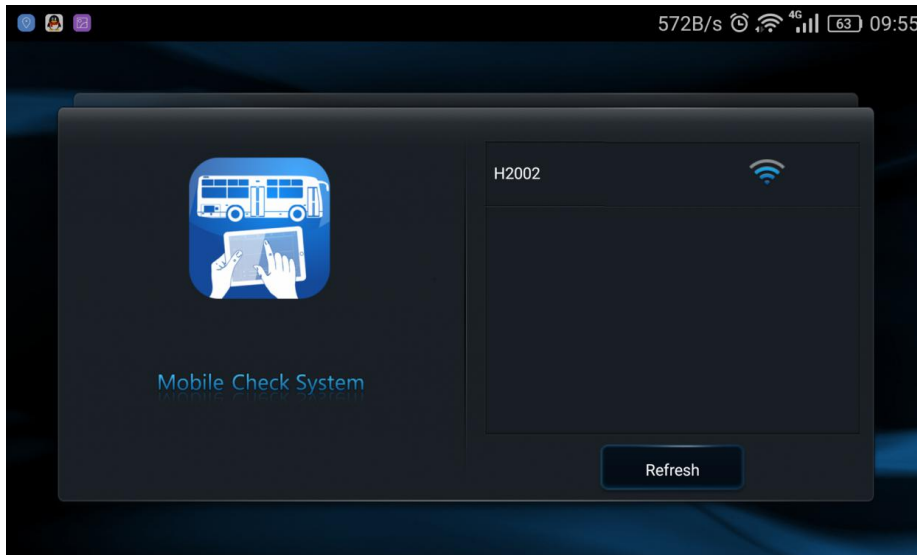
Diagram



2. Software Instrument

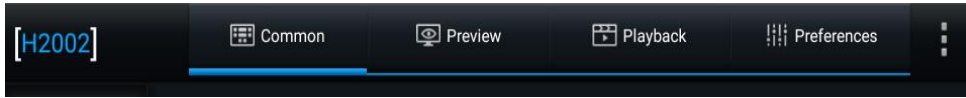
2.1. Software Log In

After installing the software in the pad, enter the log in interface. Click **Refresh**, the software will search WIFI device automatically in the Local Area Network. User needs to select the device, click **Login**, then it works.



2.2. Module Overview

There are five main modules: Common, Preview, Playback, Preference and Help.

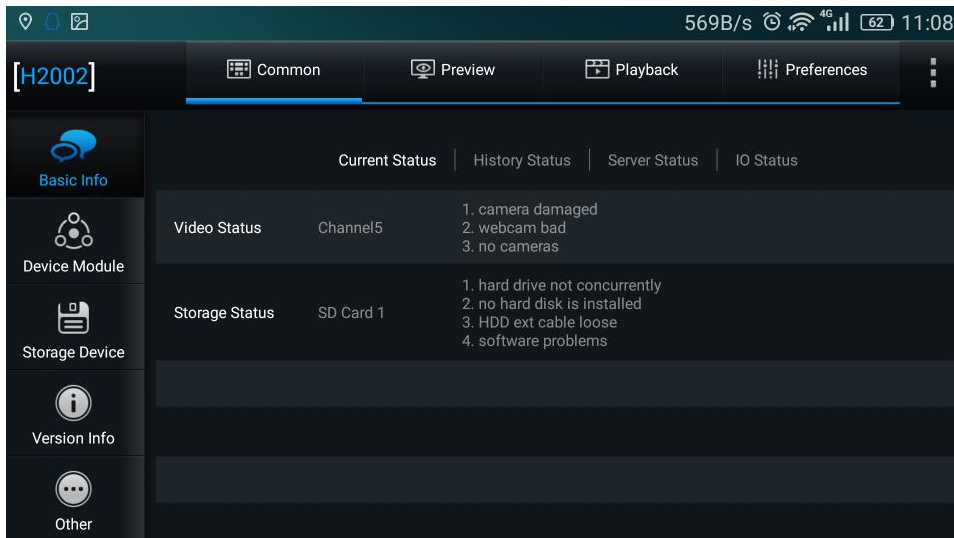


2.3. Function Overview

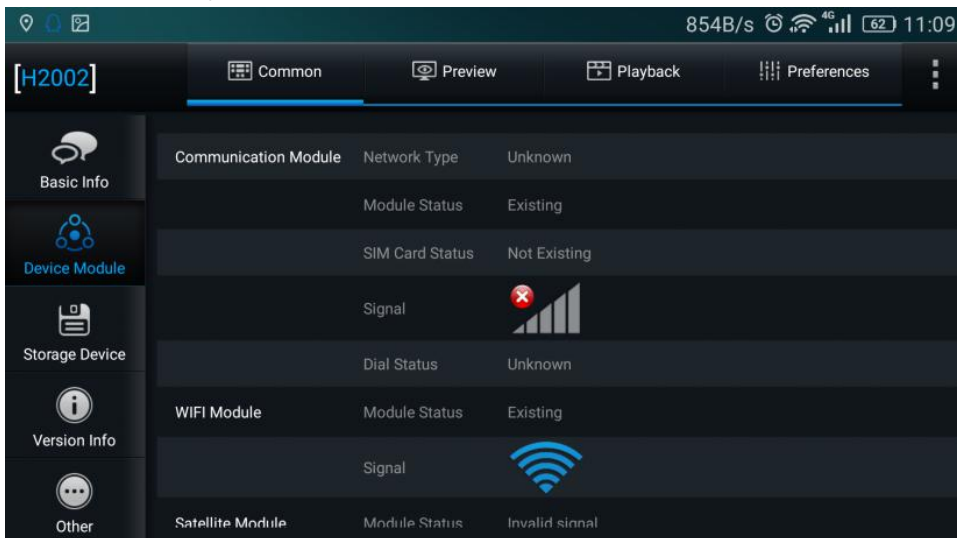
2.3.1. Common

There are Basic Information, Device Module, Storage Device and Version Information.

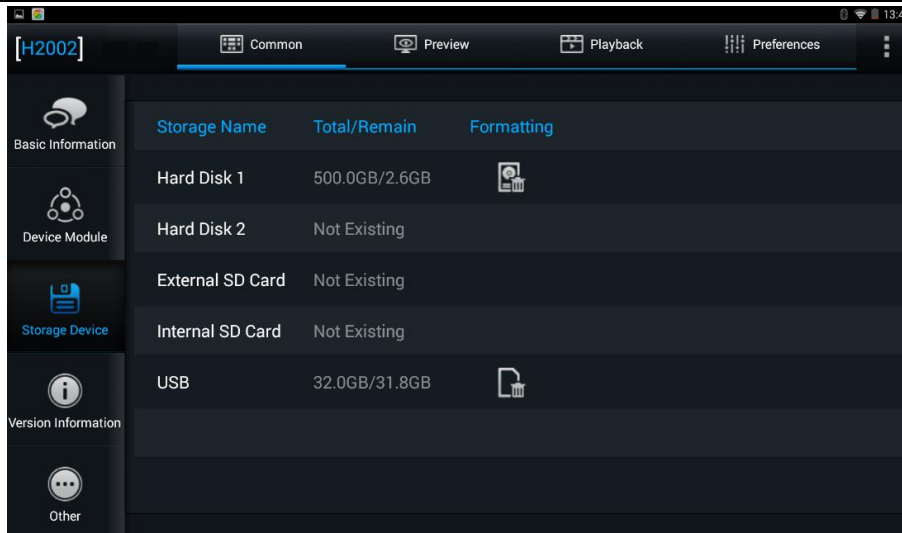
1) **Common:** It displays the fault log report of device.



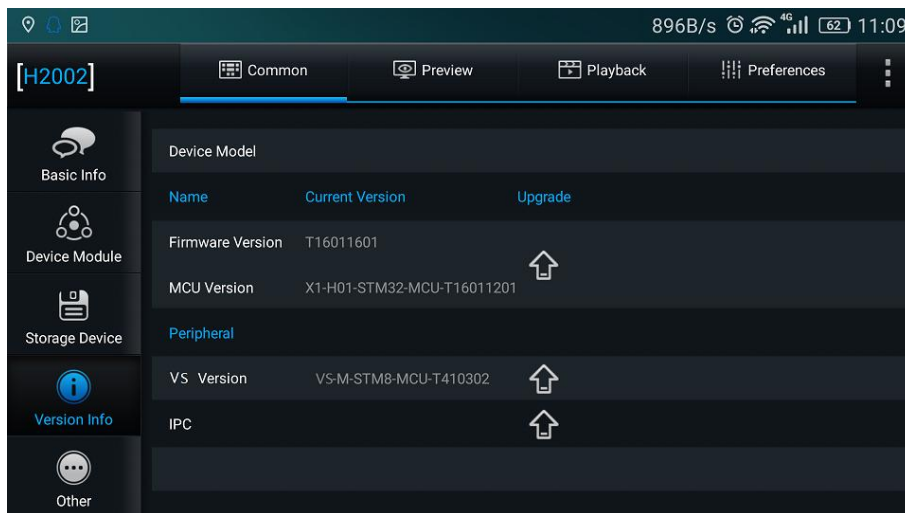
2) **Device Module:** It displays the details of communication modules.



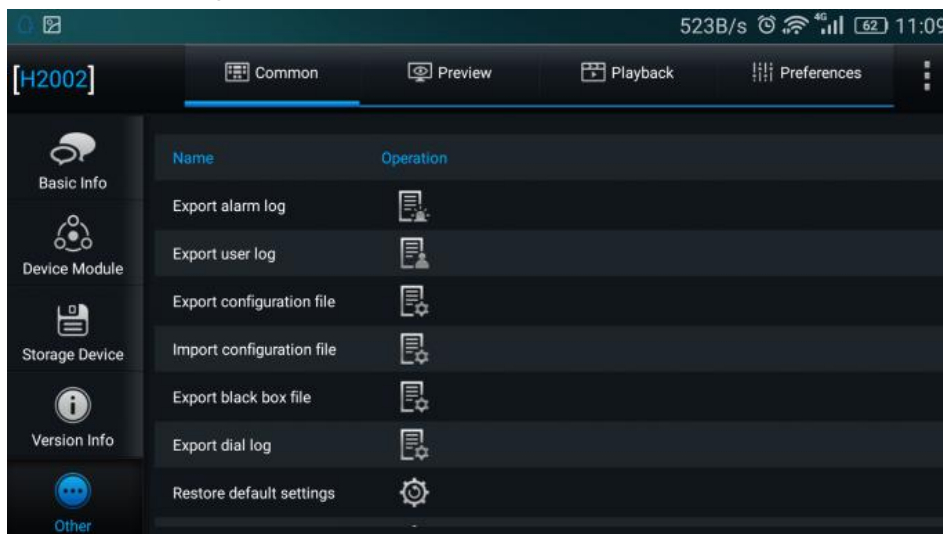
3) **Storage Device:** It displays the current status of storage device and could format the device.



- 4) **Version Information:** It displays Device Model, Firmware Version and MCU Version. Besides, user could upgrade the firmware and MCU.

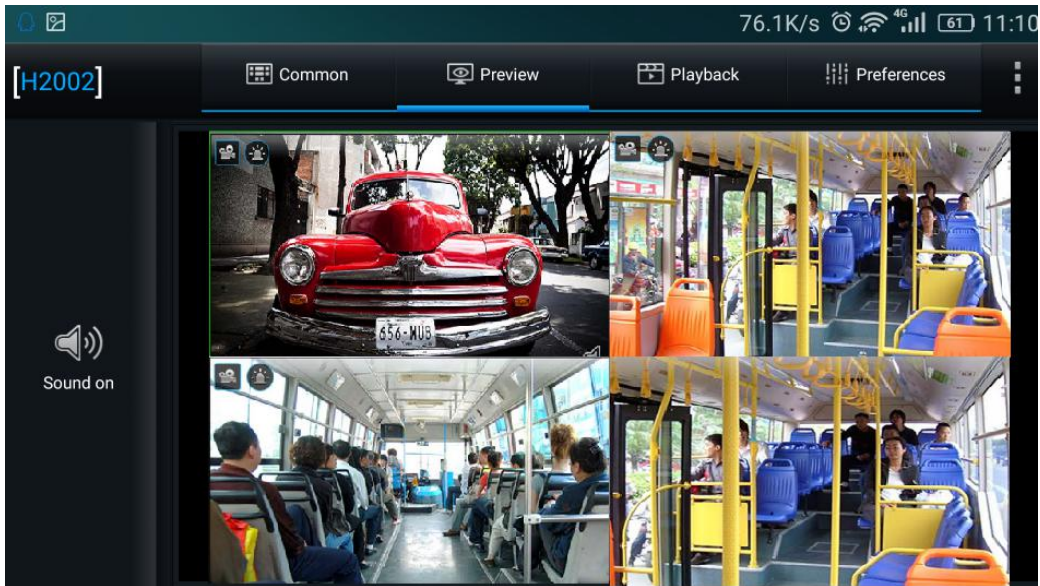


- 5) **Other:** It displays Export alarm log, Export user log, Export configuration file, Export black box file and Restore default settings.



2.3.2. Preview

It display the split screens of 1 channel or 4 channels. However, user needs to switch the channels by turning pages when there are more than 4 channels. If the current channel is IPC, it automatically switches to main stream from sub-stream as the single channel is amplified.



Sound on/off: User can turn on or turn off the sound when previewing. The icon will display in the preview interface.

2.3.3. Playback

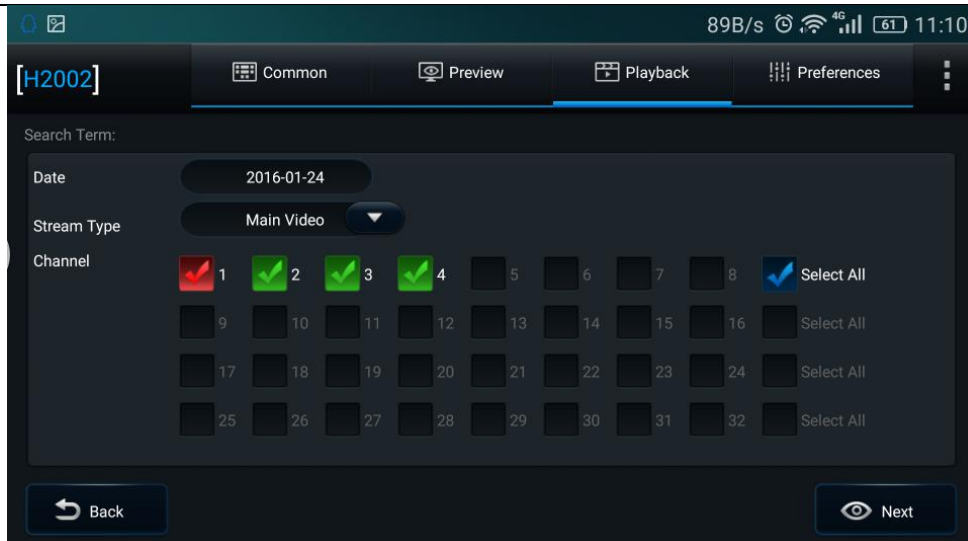
There are Alarm Calendar, Locked Calendar and Video Calendar.

The steps to playback:

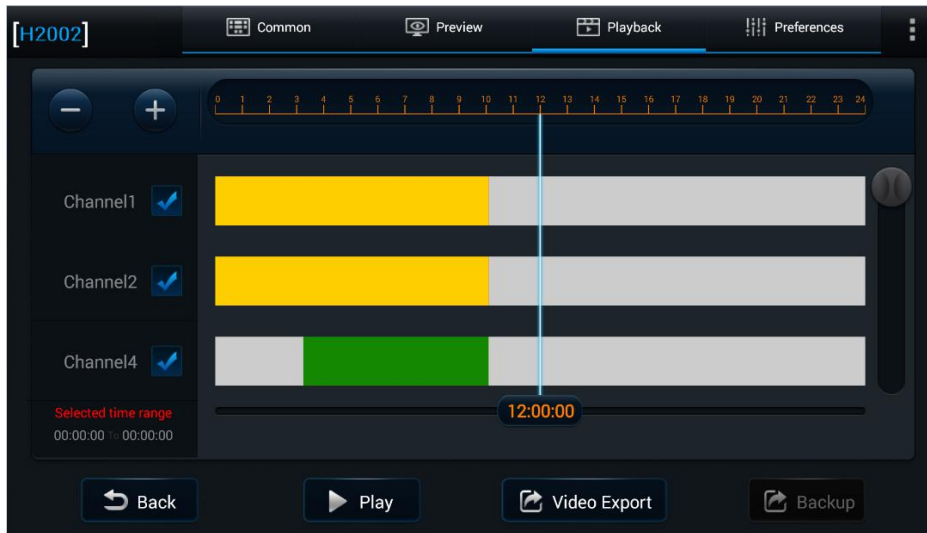
- 1) Search, then enter the playback interface, and start to search date.



- 2) Select Stream Type and Channel.



- 3) Enter the playback timeline interface, select the desired playback point, click **play**. Meanwhile, user can have video clips, unlock, backup and other operations.



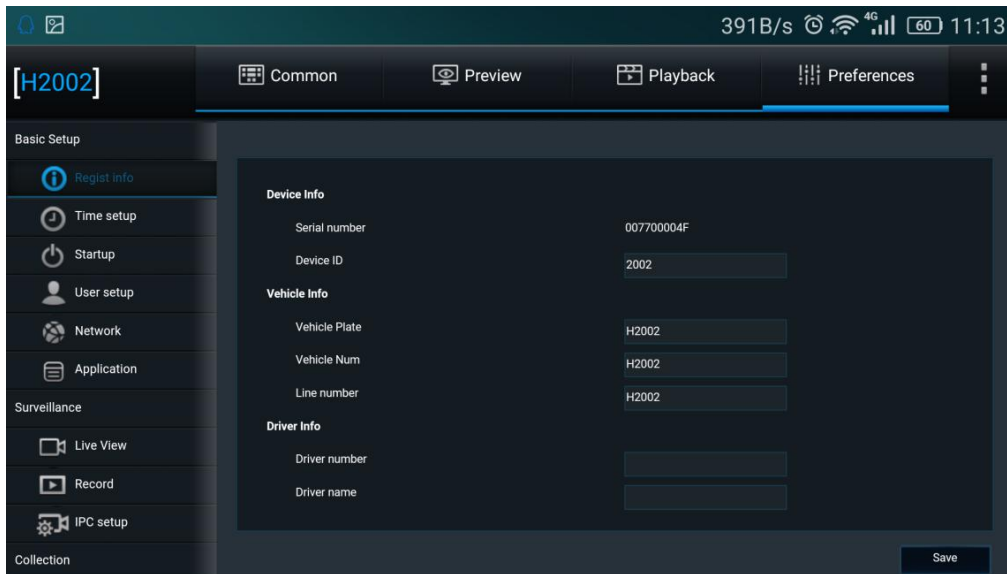
- 4) Access the video playback interface, user can stop the current playback, fast forward, rewind, slow play, frame play and other operations.



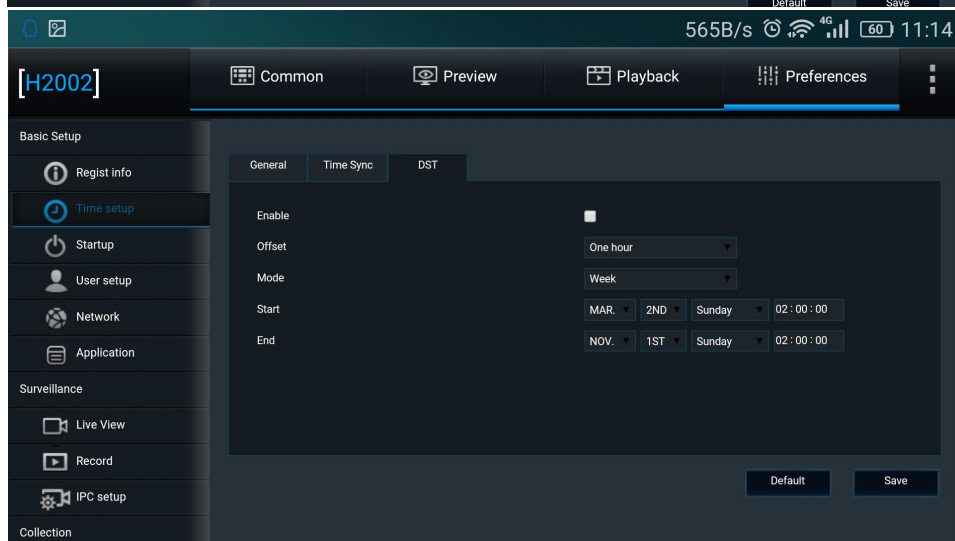
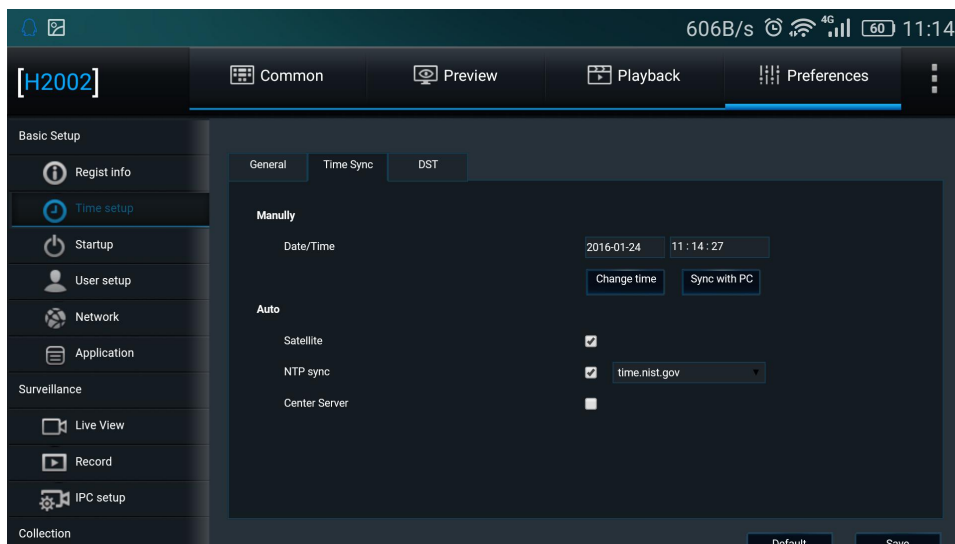
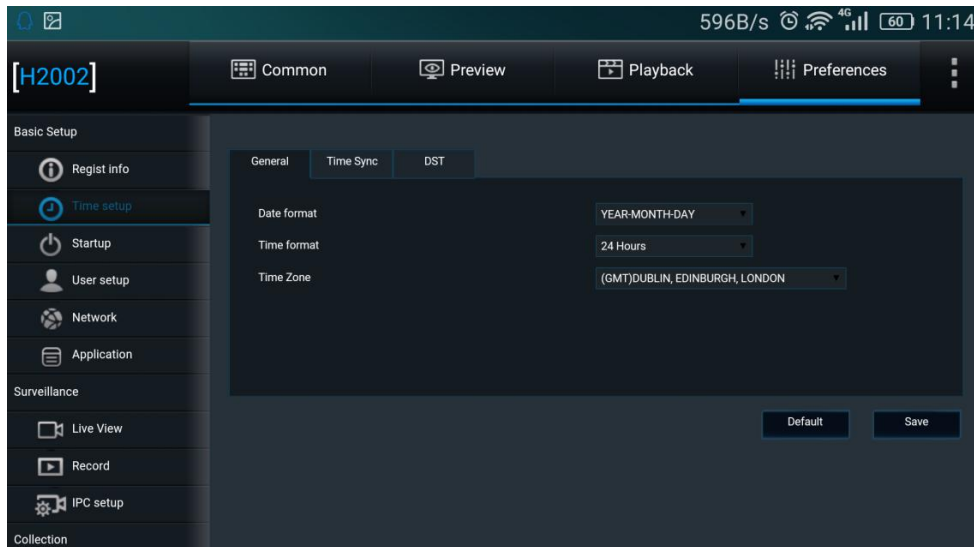


2.3.4. Preference

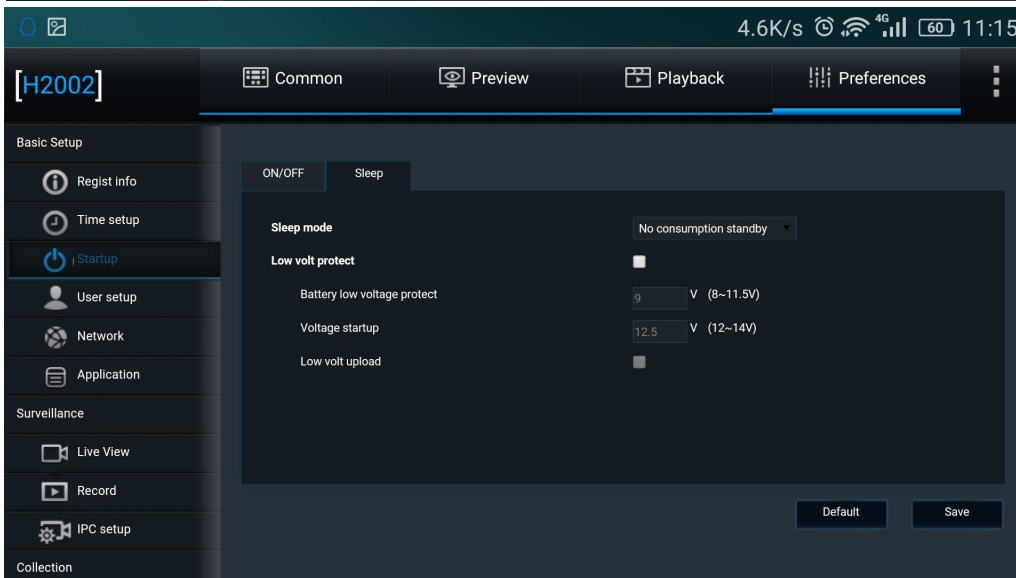
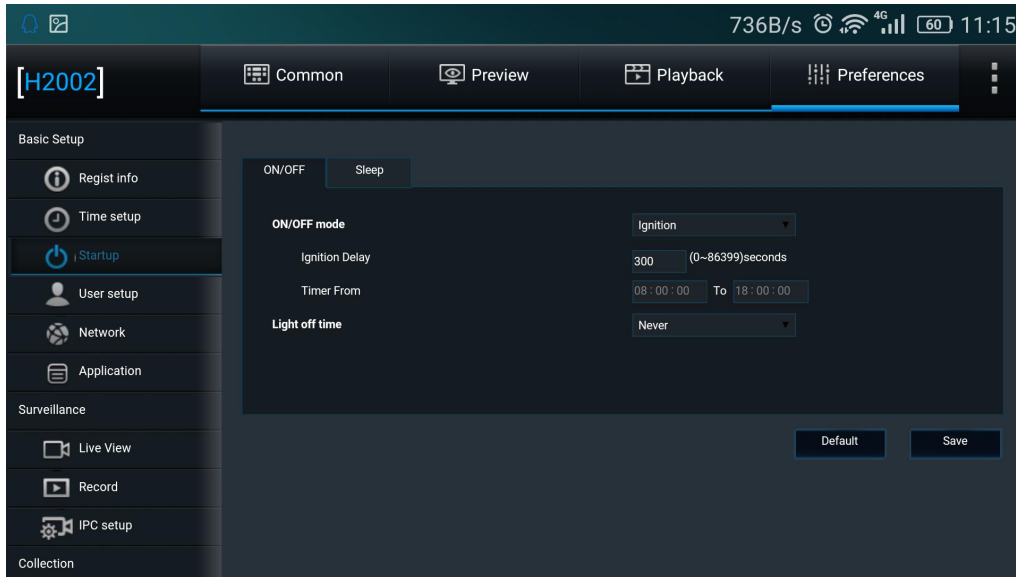
- 1) **Register info:** User can set the information of device, vehicle and driver.



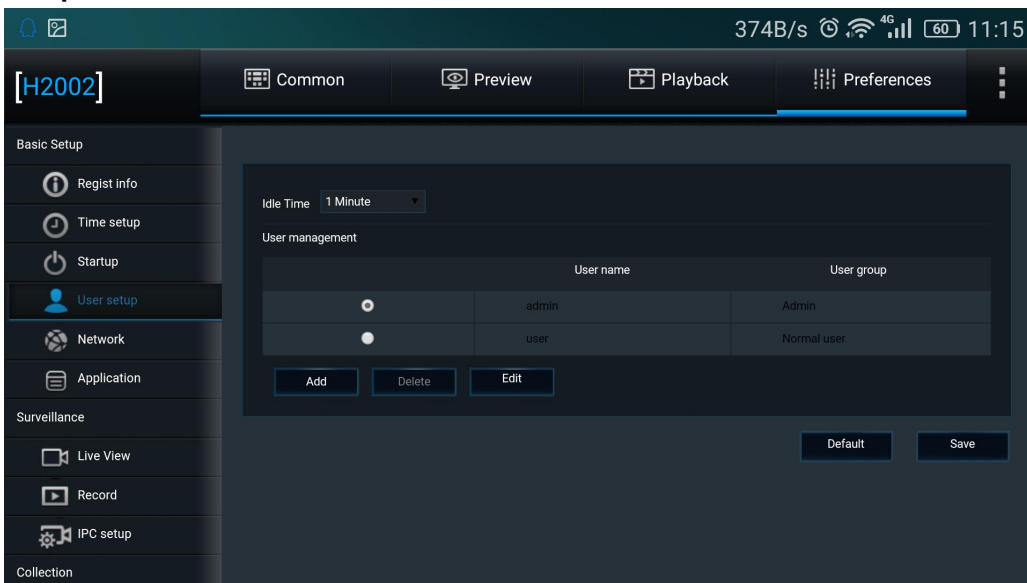
- 2) **Time Setup:** User can alter the current time system, such as date format, time format, and time zone etc.



- 3) **Startup:** User can set up ON/OFF mode, Regular boot time, sleep mode and other low-voltage protection.



4) **User setup:**User can set idle time, add, delete or edit user information.



5) **Network:** User can configure server connection and network, such as wire network, WIFI and

432B/s 4G 11:15

[H2002] Common Preview Playback Preferences

Basic Setup

- Regist info
- Time setup
- Startup
- User setup
- Network**
- Application

Surveillance

- Live View
- Record
- IPC setup

Collection

Local WiFi Communication Module Server setup

Local

- DHCP mode
- Static IP

IP address: 192.168.1.100

Subnet mask: 255.255.255.0

Gateway: 192.168.1.1

- Auto get DNS
- Use following DNS

Preferred DNS server: 114.114.114.114

Alternate DNS server: 192.168.1.1

MAC address: 00:18:00:01:01:B6

264B/s 4G 11:16

[H2002] Common Preview Playback Preferences

Basic Setup

- Regist info
- Time setup
- Startup
- User setup
- Network**
- Application

Surveillance

- Live View
- Record
- IPC setup

Collection

Local WiFi Communication Module Server setup

Enable:

WiFi setup

ESSID: H

Encryption: WPA

Password:

Static IP:

IP address: 192.168.3.201

Subnet mask: 255.255.255.0

Gateway: 192.168.3.1

457B/s 4G 11:16

[H2002] Common Preview Playback Preferences

Basic Setup

- Regist info
- Time setup
- Startup
- User setup
- Network**
- Application

Surveillance

- Live View
- Record
- IPC setup

Collection

Local WiFi Communication Module Server setup

Module1

Server type: No Service

Network type: Mix

Dialing parameter

APN:

User name:

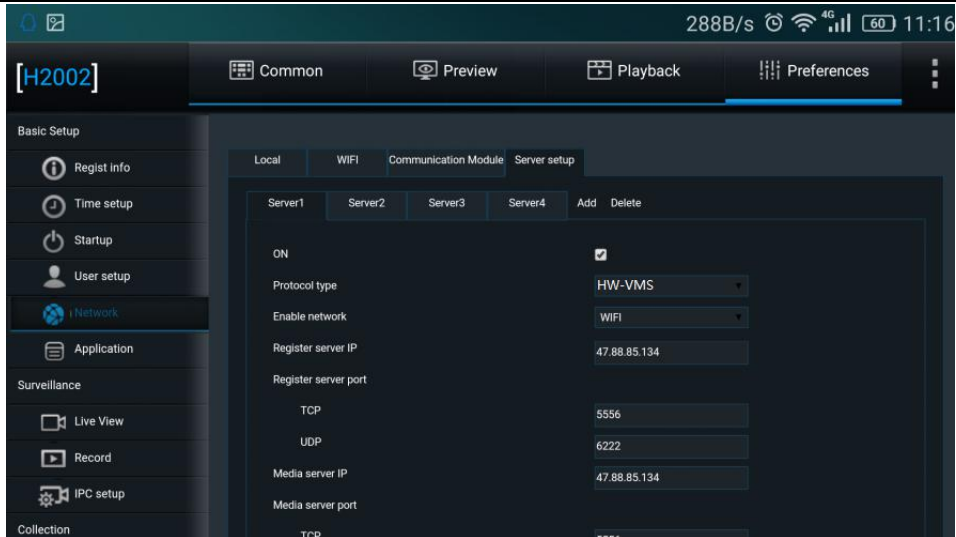
Password:

Number:

Certification: CHAP

Module2

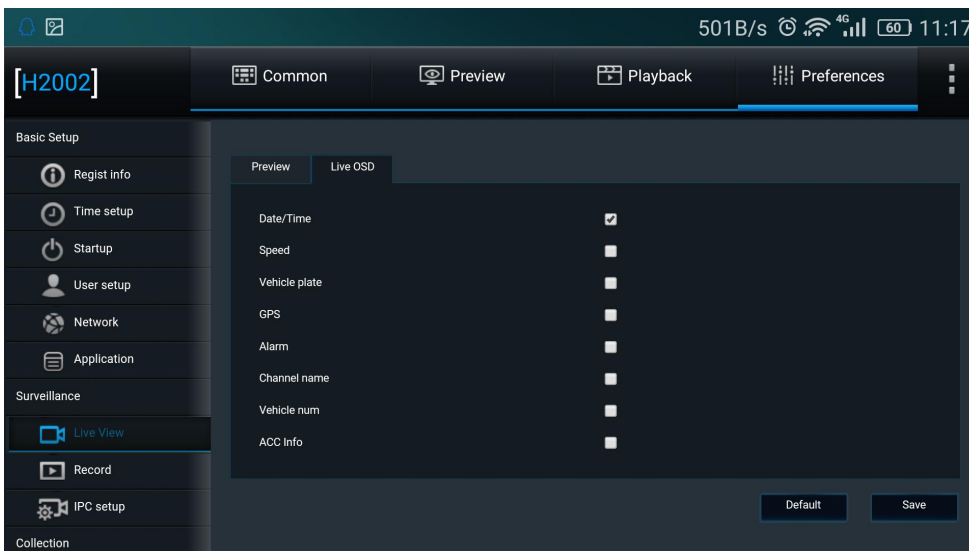
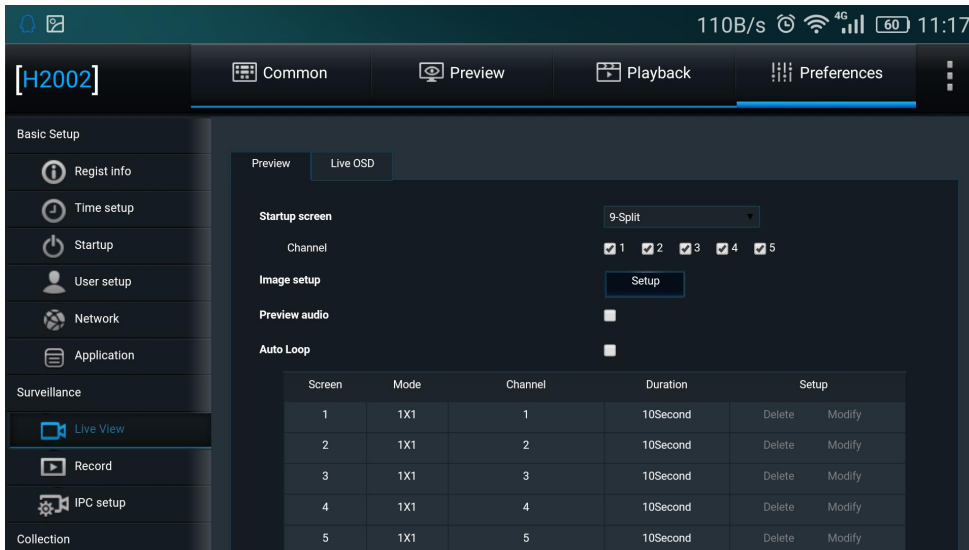
Server type: No Service



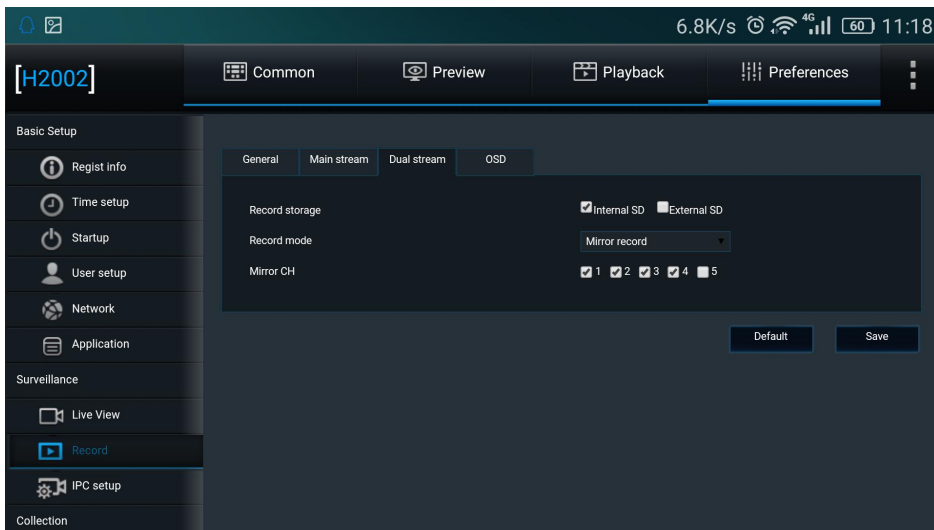
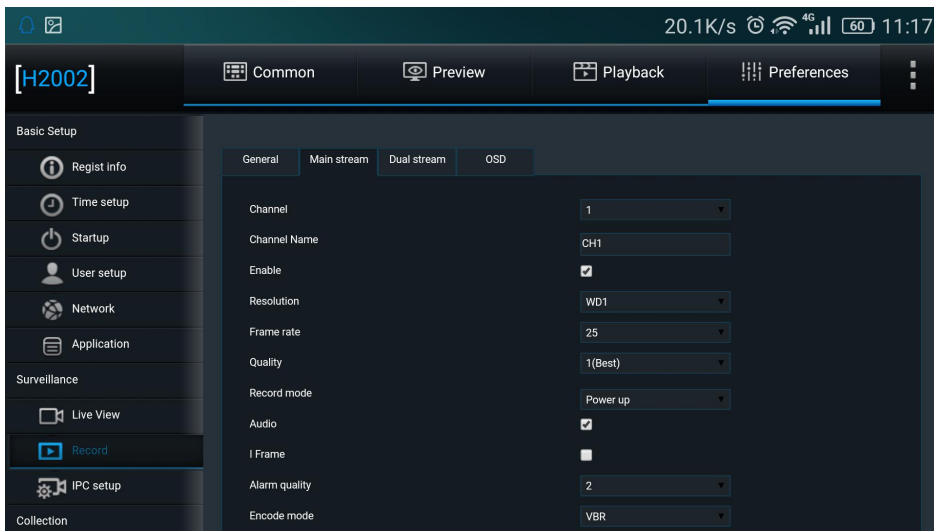
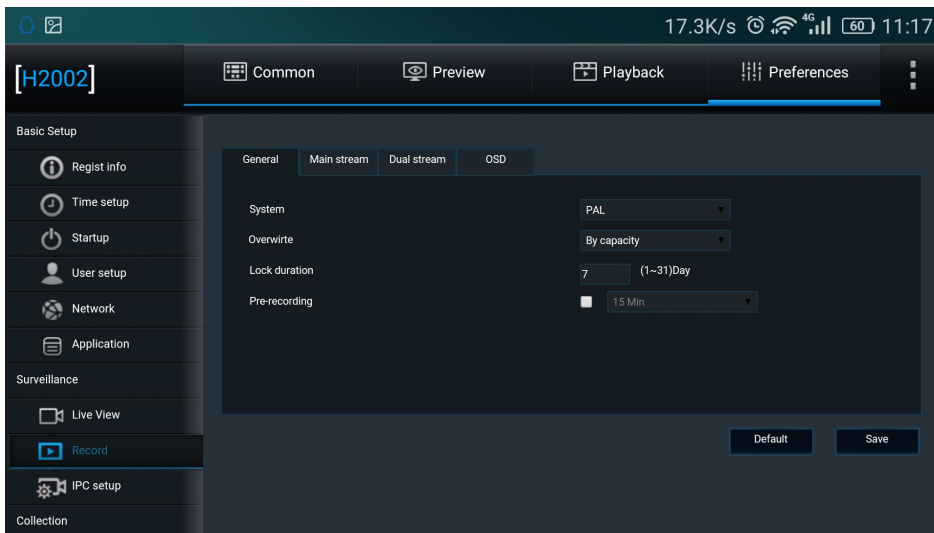
6) **Live View:** There are Preview, Sub-stream and Live OSD.

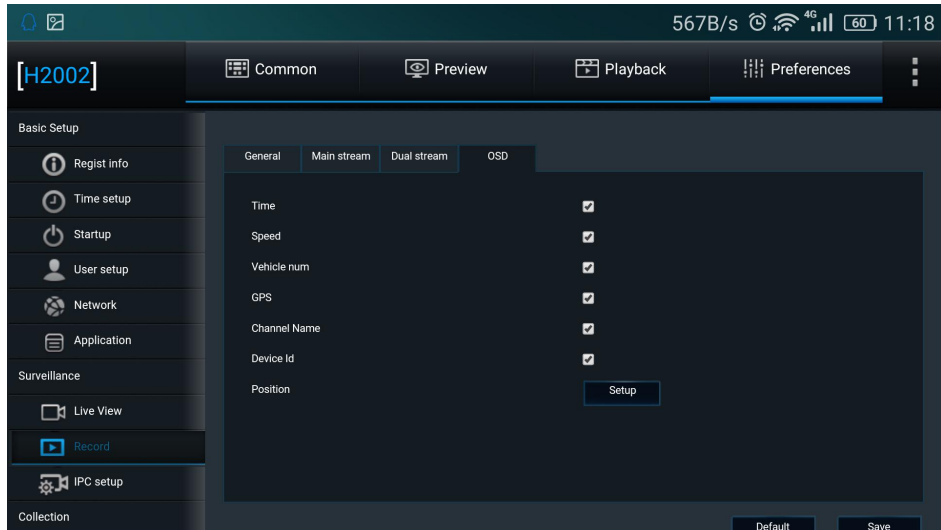
Preview: User can set information of startup screen and auto loop.

Live OSD: User can set information of time, vehicle speed, vehicle number, GPS, alarm etc.

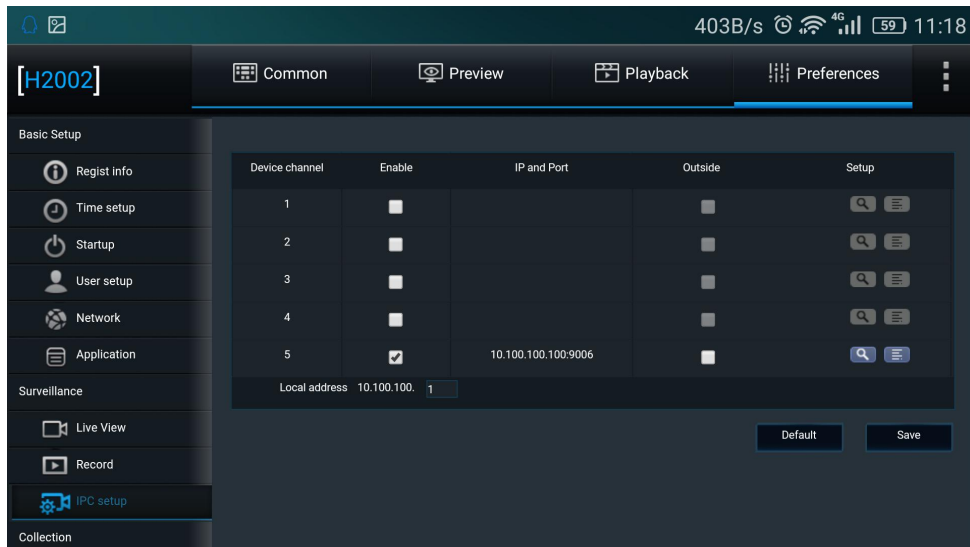


7) **Record:** There are General, Main Stream, Dual Stream and OSD. User can set information of video type, overwrite etc.

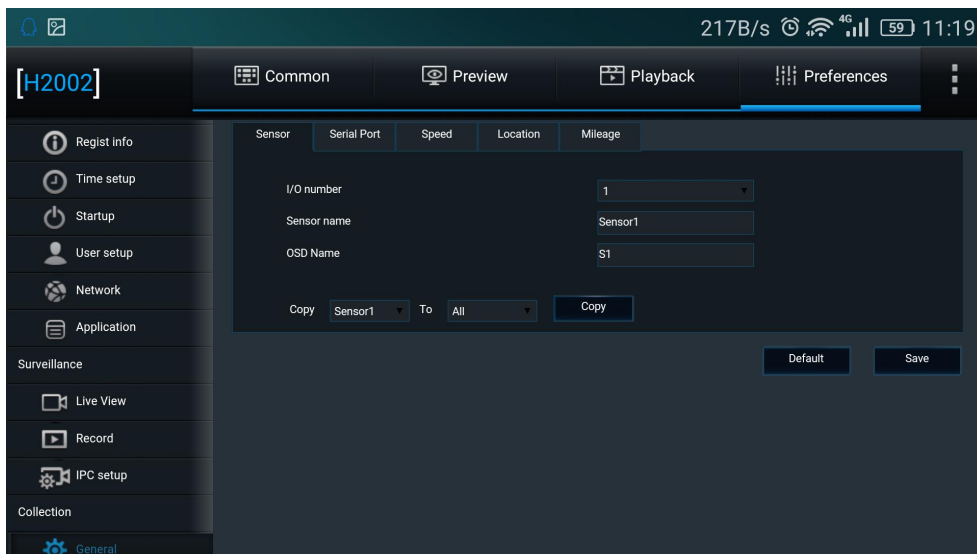




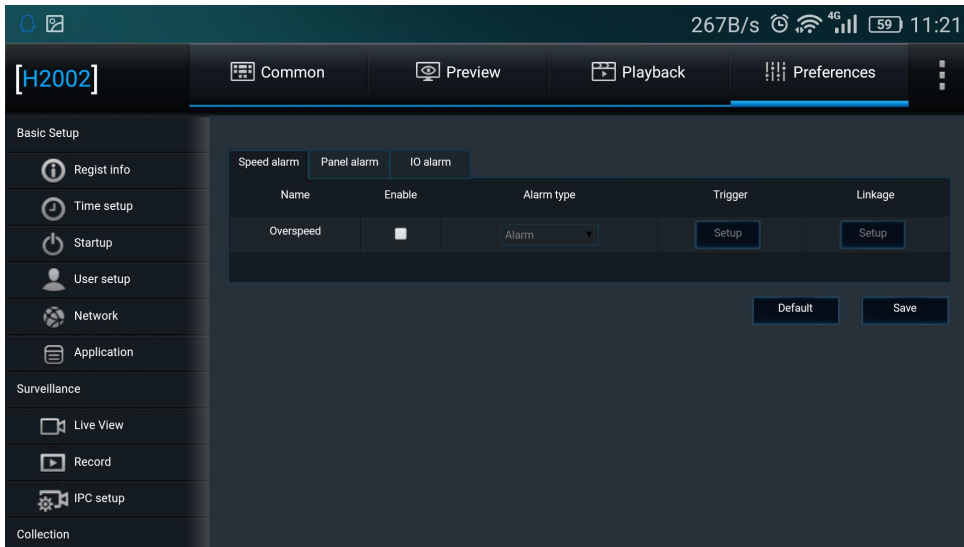
8) **IPC Setup:** User can add IPC in local network via automatic/manual search as the input video of MDVR channel.



9) **General:** There are Sensor, Serial Port and Speed.

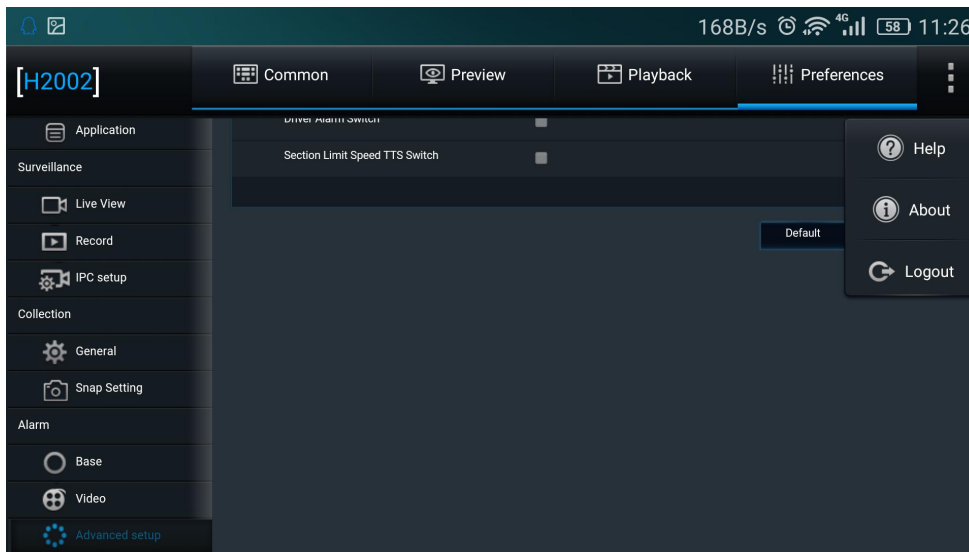


10) **Alarm:** It displays the information of alarm types and linkage, such as overspeed, panel button and switch.



2.3.5. Help

It displays the files to help solve problems



About: It displays the information of Mobile Check version and owner.

